



Activities

Family October Half Term Programme

Saturday 19th October to Friday 25th October 2019

For family activities, all children must be supervised by a parent and all parents must be supervised by a child! Please arrive at the time specified so that you receive your health and safety briefing and session instructions.

The Bedruthan team may take photos for marketing purposes during the sign-up sessions - guests are invited to opt out on the sign-up sheets.

Drop-ins are subject to availability on the day. These activities are also subject to amendments or cancellations, however we will always endeavour to replace them with similar activities.

Please check the black board for any pop up events for the day

Don't forget to wear messy craft appropriate clothes to craft sessions and outdoor clothing for outdoor activities!



Sat Oct 19th



ACTIVITIES

3:00pm – 4:30pm - Decorate a delicious dinosaur footprint biscuit
- The Venue

3:00pm – 3:45pm, 4:00pm – 4:45pm and 5:00pm – 5:45pm - Cold wax batik textile art - Craft Room - Please sign up on the day at our Create gallery (ages 3+)

6:00pm – 7:00pm - Traditional family fairground games - The Venue

SPA

9:00am - 9:30am - Family Spa Time - Bedruthan Spa (£5 per person) - Please book with the spa

9:00am - 9:30am - Family Sensory Spa Garden - Sensory Spa Garden (£5 per person) - Please book with the spa

2:45pm - 3:15pm - Family Sensory Spa Garden - Sensory Spa Garden (£5 per person) - Please book with the spa

INSPIRATION

Borrow a football from reception and head down to our sea view football pitch. There is no charge and they are available any day.





Sun Oct 20th

ACTIVITIES

8:30am – 9:00am - Wake and Shake Up - The Venue

3:00pm - 4:30pm - Create a dinosaur comic story - The Venue

3:00pm – 3:45pm, 4:00pm – 4.45pm and 5:00pm – 5:45pm - Learn about Indigo dying and create a Japanese style Shibori tie-dye cushion cover - Craft room - Please sign up on the day at our Create gallery (ages 5+)

6:00pm – 7:00pm - Family Disco - The Venue

S P A

9:00am - 9:30am - Family Spa Time - Bedruthan Spa (£5 per person) - Please book with the spa

9:00am - 9:30am - Family Sensory Spa Garden - Sensory Spa Garden (£5 per person) - Please book with the spa

2:45pm - 3:15pm - Family Sensory Spa Garden - Sensory Spa Garden (£5 per person) - Please book with the spa

INSPIRATION

Visit the awe inspiring Eden Project to explore their rainforest biome (the largest rainforest in captivity).

Mon Oct 21st



ACTIVITIES

3:00pm – 4:00pm, 4:30pm – 5:30pm - Explore light and vision with your own camera obscura - Craft Room - Please sign up on the day at our Create gallery (ages 8+)

3:00pm – 4:30pm - Family beach rounders - Meet in the ballroom

6:00pm – 7:00pm - Adrian the Magician - The Venue

S P A

9:00am - 9:30am - Family Spa Time - Bedruthan Spa (£5 per person) - Please book with the spa

9:00am - 9:30am - Family Sensory Spa Garden - Sensory Spa Garden (£5 per person) - Please book with the spa

2:45pm - 3:15pm - Family Sensory Spa Garden - Sensory Spa Garden (£5 per person) - Please book with the spa

INSPIRATION

Visit the Lost Gardens of Heligan Explore the natural playground that is Heligan with over 200 acres this day out is sure to tire out the most energetic little legs!



Tues Oct 22nd

ACTIVITIES

3:00pm – 4:30pm - Football skills and match - Meet on the Football Pitch

1:00pm - 2:00pm (Adult Session) and 3:00pm - 6:00pm - Creative Hub – Painting workshop - Craft Room

6:00pm – 7:00pm - Traditional bedtime tales from around the world with Gary - The Venue

SPA

9:00am - 9:30am - Family Spa Time - Bedruthan Spa (£5 per person) - Please book with the spa

9:00am - 9:30am - Family Sensory Spa Garden - Sensory Spa Garden (£5 per person) - Please book with the spa

2:45pm - 3:15pm - Family Sensory Spa Garden - Sensory Spa Garden (£5 per person) - Please book with the spa

INSPIRATION

Walk along the coastal path to the stunning Bedruthan Steps. Please collect a map from our reception team and don't forget to order a packed lunch from our Wild Café.





Wed Oct 23rd

ACTIVITIES

8:30am – 9:00am - Wake and Shake Up - The Venue

1:00pm - 2:00pm (Adult Session), 2:15pm – 3:15pm and 3:30pm –

4:00pm - Book Binding - Craft Room - Please sign up on the day at our Create gallery (ages 8+)

3:00pm – 4:30pm - Family beach games - Meet in the Ballroom or on Mawgan Porth Beach

6:00pm – 7:00pm - Magic Show with David - The Venue

SPA

9:00am - 9:30am - Family Spa Time - Bedruthan Spa (£5 per person) - Please book with the spa

9:00am - 9:30am - Family Sensory Spa Garden - Sensory Spa Garden (£5 per person) - Please book with the spa

2:45pm - 3:15pm - Family Sensory Spa Garden - Sensory Spa Garden (£5 per person) - Please book with the spa

INSPIRATION

Visit Newquay's world famous Fistral Beach, the perfect playground for walkers and surfers alike with sand dunes, high cliffs and stunning views.





Thurs Oct 24th

ACTIVITIES

3:00pm – 4:30pm - Doughnut decorating - The Venue

3:00pm – 3:45pm, 4:00pm – 4:45pm and 5:00pm – 5:45pm - Make a felted dinosaur picture - Craft Room - Please sign up on the day at our Create gallery (ages 5+)

6:00pm – 7:00pm - Jules the Ventriloquist - The Venue

SPA

9:00am - 9:30am - Family Spa Time - Bedruthan Spa (£5 per person) - Please book with the spa

9:00am - 9:30am - Family Sensory Spa Garden - Sensory Spa Garden (£5 per person) - Please book with the spa

2:45pm - 3:15pm - Family Sensory Spa Garden - Sensory Spa Garden (£5 per person) - Please book with the spa

INSPIRATION

Visit the National Trust Trerice House and Gardens near Newquay. This Elizabethan manor house has fine interiors and delightful gardens to explore, as well as seasonal activities to keep the kids occupied.





Fri Oct 25th

ACTIVITIES

1:30pm – 4:30pm - Learn to balance a feather, hula hoop, spin plates and much more in Circus Skills - The Venue

3:00pm – 3:45pm, 4:00pm – 4:45pm and 5:00pm – 5:45pm - Make your own beeswax wraps - Craft Room - Please sign up on the day at our Create gallery (ages 5+)

6:00pm – 7:00pm - Circus Show - The Venue

SPA

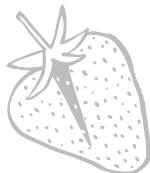
9:00am - 9:30am - Family Spa Time - Bedruthan Spa (£5 per person) - Please book with the spa

9:00am - 9:30am - Family Sensory Spa Garden - Sensory Spa Garden (£5 per person) - Please book with the spa

2:45pm - 3:15pm - Family Sensory Spa Garden - Sensory Spa Garden (£5 per person) - Please book with the spa

INSPIRATION

Go Karting at St Eval - Pop up the road to Cornwall's largest and fastest outdoor go-kart track! Fun for all the family and ideal for those with a competitive streak!





Beach Finds

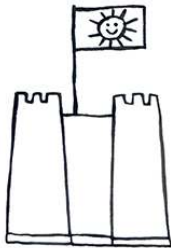
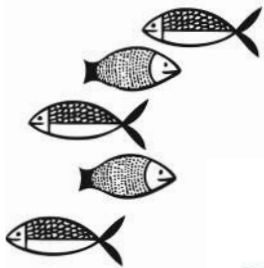
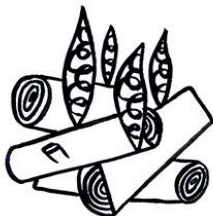
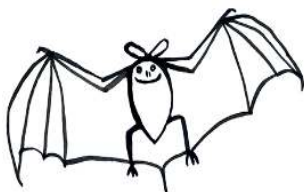
THINGS I HAVE FOUND WHILST ON THE BEACH





Colouring

SPACE FOR LITTLE ONES TO GET CREATIVE





I d e a s

THINGS I WOULD LIKE TO DO DURING MY STAY

